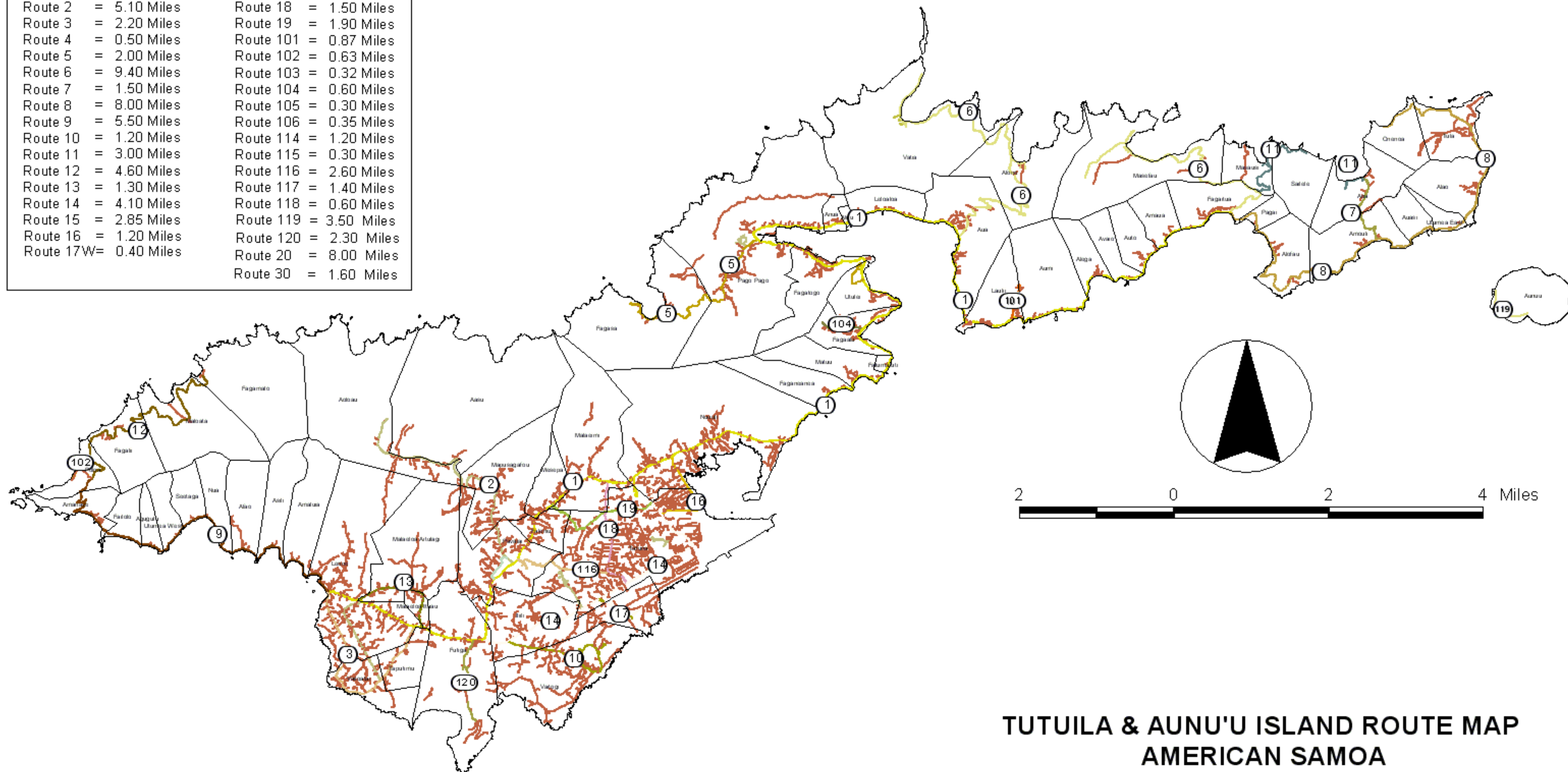


# ROUTE LEGEND:

Route 1 = 22.90 Miles	Route 17 = 0.80 Miles
Route 2 = 5.10 Miles	Route 18 = 1.50 Miles
Route 3 = 2.20 Miles	Route 19 = 1.90 Miles
Route 4 = 0.50 Miles	Route 101 = 0.87 Miles
Route 5 = 2.00 Miles	Route 102 = 0.63 Miles
Route 6 = 9.40 Miles	Route 103 = 0.32 Miles
Route 7 = 1.50 Miles	Route 104 = 0.60 Miles
Route 8 = 8.00 Miles	Route 105 = 0.30 Miles
Route 9 = 5.50 Miles	Route 106 = 0.35 Miles
Route 10 = 1.20 Miles	Route 114 = 1.20 Miles
Route 11 = 3.00 Miles	Route 115 = 0.30 Miles
Route 12 = 4.60 Miles	Route 116 = 2.60 Miles
Route 13 = 1.30 Miles	Route 117 = 1.40 Miles
Route 14 = 4.10 Miles	Route 118 = 0.60 Miles
Route 15 = 2.85 Miles	Route 119 = 3.50 Miles
Route 16 = 1.20 Miles	Route 120 = 2.30 Miles
Route 17W = 0.40 Miles	Route 20 = 8.00 Miles
	Route 30 = 1.60 Miles



**TUTUILA & AUNU'U ISLAND ROUTE MAP  
AMERICAN SAMOA**